

\$430,000 - 15003 88 Street, Edmonton

MLS® #E4459639

\$430,000

4 Bedroom, 3.00 Bathroom, 1,191 sqft

Single Family on 0.00 Acres

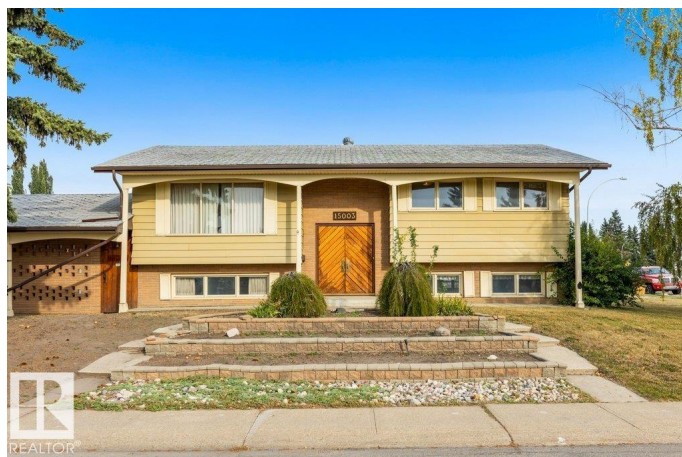
Evansdale, Edmonton, AB

Welcome to this 4-bedroom, 3-bathroom home on a spacious corner lot in the family-friendly community of Evansdale. This one-owner property is a true time capsule, full of character and incredible potential for those ready to make it their own. The bright open-concept layout offers a welcoming flow, perfect for family living and entertaining. Upstairs, youâ€™ll find three bedrooms, including a primary with a 3-piece ensuite, along with an additional 4-piece bathroom. The lower level expands your living space with a large family room, a rec room complete with a bar, and a generous fourth bedroomâ€”ideal for guests, teens, or a home office. The homeâ€™s prime location is just steps from schools, parks, and shopping, making it a convenient and family-oriented choice. Whether youâ€™re looking for a solid investment or envisioning your forever home, this property is brimming with opportunity. With the right touch, it could truly shine for years to come.

Built in 1972

Essential Information

MLS® #	E4459639
Price	\$430,000
Bedrooms	4
Bathrooms	3.00



Full Baths	3
Square Footage	1,191
Acres	0.00
Year Built	1972
Type	Single Family
Sub-Type	Detached Single Family
Style	Bi-Level
Status	Active

Community Information

Address	15003 88 Street
Area	Edmonton
Subdivision	Evansdale
City	Edmonton
County	ALBERTA
Province	AB
Postal Code	T5E 5F9

Amenities

Amenities	Air Conditioner, Bar, Barbecue-Built-In, Deck, No Animal Home, No Smoking Home, See Remarks
Parking	Double Garage Detached

Interior

Interior Features	ensuite bathroom
Appliances	Air Conditioning-Central, Dishwasher-Built-In, Dryer, Garage Control, Garage Opener, Oven-Microwave, Refrigerator, Stove-Countertop Electric, Washer, Window Coverings
Heating	Forced Air-1, Natural Gas
Stories	2
Has Basement	Yes
Basement	Full, Finished

Exterior

Exterior	Wood, Brick, Metal
Exterior Features	Corner Lot, Low Maintenance Landscape, Paved Lane, Playground Nearby, Schools, Shopping Nearby, See Remarks
Roof	Asphalt Shingles
Construction	Wood, Brick, Metal

Foundation Concrete Perimeter

Additional Information

Date Listed September 26th, 2025

Days on Market 1

Zoning Zone 02

DATA IS DEEMED RELIABLE BUT IS NOT GUARANTEED ACCURATE BY THE REALTORS® ASSOCIATION OF EDMONTON. COPYRIGHT 2025 BY THE REALTORS® ASSOCIATION OF EDMONTON. ALL RIGHTS RESERVED.Trademarks are owned or controlled by the Canadian Real Estate Association (CREA) and identify real estate professionals who are members of CREA (REALTOR®, REALTORS®) and/or the quality of services they provide (MLS®, Multiple Listing Service®)

Listing information last updated on September 27th, 2025 at 2:47pm MDT