

\$449,944 - 4713 160 Avenue, Edmonton

MLS® #E4449279

\$449,944

3 Bedroom, 3.50 Bathroom, 1,445 sqft

Single Family on 0.00 Acres

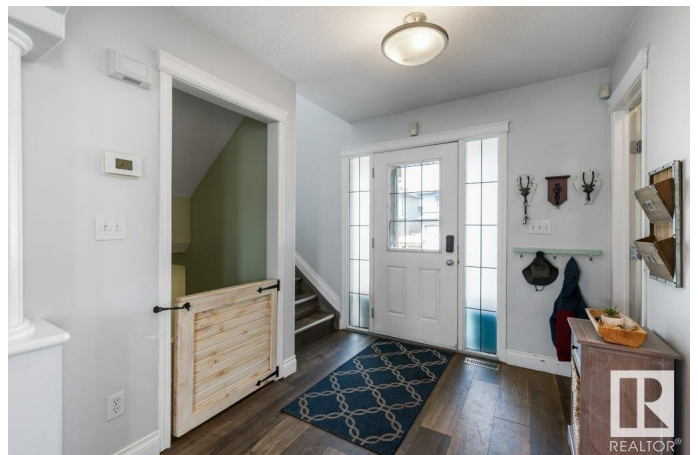
Brintnell, Edmonton, AB

BEAUTIFUL BRINTNELL! This 3 Bedroom, 4 Bath Home with over 2,000 sq ft of living space includes a **FINISHED BASEMENT**. The Main Floor Kitchen features a **PANTRY & STAINLESS STEEL APPLIANCES** (6 years old). Upstairs there are 3 ample sized Bedrooms including a Primary Bedroom w/ Walk-In Closet & Ensuite. The Basement contains Laundry, a full Bath & Rec Room (crafts, media room, fitness or 4th Bedroom). South facing Backyard leads to a **BRIGHT & SUNNY HOME** all year round. The Yard is fully fenced w/ a Deck, fruit trees (apple & plum) & a garden bed. **DOUBLE DETACHED GARAGE** (19'1" x 19'9"). Bonus: **CARPET-FREE & NEW HOT WATER TANK**. Only a 15 mins drive to CFB / Edmonton Garrison. Easy commute to downtown via car or transit. Family friendly neighbourhood has many amenities (groceries, banking, restaurants, Manning Crossing, Costco), schools, spray park & soccer fields.

Built in 2007

Essential Information

MLS® #	E4449279
Price	\$449,944
Bedrooms	3
Bathrooms	3.50



Full Baths	3
Half Baths	1
Square Footage	1,445
Acres	0.00
Year Built	2007
Type	Single Family
Sub-Type	Detached Single Family
Style	2 Storey
Status	Active

Community Information

Address	4713 160 Avenue
Area	Edmonton
Subdivision	Brintnell
City	Edmonton
County	ALBERTA
Province	AB
Postal Code	T5Y 3M1

Amenities

Amenities	Deck, Front Porch, No Smoking Home
Parking	Double Garage Detached

Interior

Interior Features	ensuite bathroom
Appliances	Dishwasher-Built-In, Dryer, Microwave Hood Fan, Refrigerator, Stove-Electric, Washer, Window Coverings
Heating	Forced Air-1, Natural Gas
Stories	2
Has Basement	Yes
Basement	Full, Finished

Exterior

Exterior	Concrete, Vinyl
Exterior Features	Back Lane, Fenced, Landscaped, Public Transportation, Schools, Shopping Nearby
Roof	Asphalt Shingles
Construction	Concrete, Vinyl
Foundation	Concrete Perimeter

School Information

Elementary	Delwood/St Dominic
Middle	Balwin/JJ Bowlen
High	ME Lazerte/Archbish OLeary

Additional Information

Date Listed	July 23rd, 2025
Days on Market	8
Zoning	Zone 03

DATA IS DEEMED RELIABLE BUT IS NOT GUARANTEED ACCURATE BY THE REALTORS® ASSOCIATION OF EDMONTON. COPYRIGHT 2025 BY THE REALTORS® ASSOCIATION OF EDMONTON. ALL RIGHTS RESERVED.Trademarks are owned or controlled by the Canadian Real Estate Association (CREA) and identify real estate professionals who are members of CREA (REALTOR®, REALTORS®) and/or the quality of services they provide (MLS®, Multiple Listing Service®)

Listing information last updated on July 30th, 2025 at 10:17pm MDT