

\$435,000 - 3533 11 Street, Edmonton

MLS® #E4440395

\$435,000

3 Bedroom, 2.50 Bathroom, 1,402 sqft

Single Family on 0.00 Acres

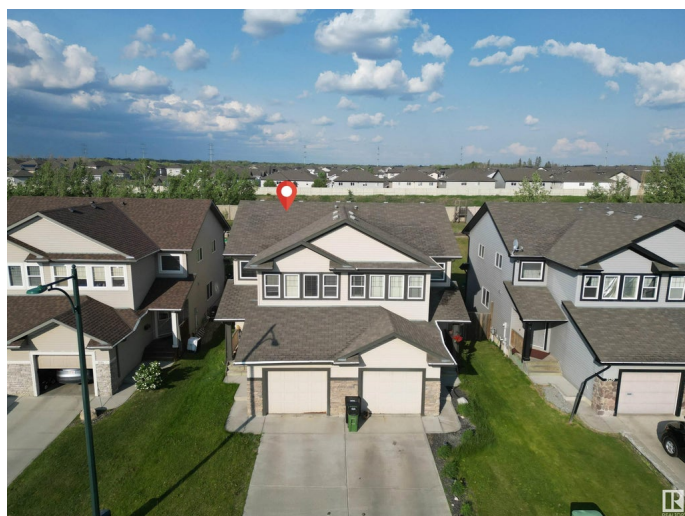
Tamarack, Edmonton, AB

Located in the sought-after Tamarack neighborhood, this well-maintained half duplex offers 3 bedrooms and 2.5 bathrooms with a bright open layout. The main floor features a welcoming living room with a cozy fireplace and a spacious kitchen that flows into the dining area. Upstairs includes a bonus room that can be used as a home office or play area, along with three bedrooms including a primary with walk-in closet and ensuite. Enjoy a spacious backyard with no rear neighbors for added privacy. The attached garage provides ample storage, and the basement is ready for future development. Just a 5-minute walk to school and close to parks, shopping, Whitemud Drive, and Anthony Henday.

Built in 2007

Essential Information

| | |
|----------------|-----------|
| MLS® # | E4440395 |
| Price | \$435,000 |
| Bedrooms | 3 |
| Bathrooms | 2.50 |
| Full Baths | 2 |
| Half Baths | 1 |
| Square Footage | 1,402 |
| Acres | 0.00 |
| Year Built | 2007 |



| | |
|----------|---------------|
| Type | Single Family |
| Sub-Type | Half Duplex |
| Style | 2 Storey |
| Status | Active |

Community Information

| | |
|-------------|----------------|
| Address | 3533 11 Street |
| Area | Edmonton |
| Subdivision | Tamarack |
| City | Edmonton |
| County | ALBERTA |
| Province | AB |
| Postal Code | T6T 0J7 |

Amenities

| | |
|-----------|------------------------|
| Amenities | See Remarks |
| Parking | Single Garage Attached |

Interior

| | |
|-------------------|---|
| Interior Features | ensuite bathroom |
| Appliances | Dishwasher-Built-In, Dryer, Garage Opener, Microwave Hood Fan, Refrigerator, Stove-Electric, Washer |
| Heating | Forced Air-1, Natural Gas |
| Stories | 2 |
| Has Basement | Yes |
| Basement | Full, Unfinished |

Exterior

| | |
|-------------------|--|
| Exterior | Wood, Composition, Vinyl |
| Exterior Features | Fenced, Flat Site, Landscaped, Playground Nearby, Public Transportation, Schools, Shopping Nearby, See Remarks |
| Roof | Asphalt Shingles |
| Construction | Wood, Composition, Vinyl |
| Foundation | Concrete Perimeter |

Additional Information

| | |
|----------------|----------------|
| Date Listed | June 4th, 2025 |
| Days on Market | 90 |
| Zoning | Zone 30 |

DATA IS DEEMED RELIABLE BUT IS NOT GUARANTEED ACCURATE BY THE REALTORS® ASSOCIATION OF EDMONTON. COPYRIGHT 2025 BY THE REALTORS® ASSOCIATION OF EDMONTON. ALL RIGHTS RESERVED.Trademarks are owned or controlled by the Canadian Real Estate Association (CREA) and identify real estate professionals who are members of CREA (REALTOR®, REALTORS®) and/or the quality of services they provide (MLS®, Multiple Listing Service®)

Listing information last updated on September 2nd, 2025 at 11:02am MDT