

# \$1,599,000 - 2423 Tegler Green, Edmonton

MLS® #E4440369

**\$1,599,000**

7 Bedroom, 6.00 Bathroom, 4,223 sqft  
Single Family on 0.00 Acres

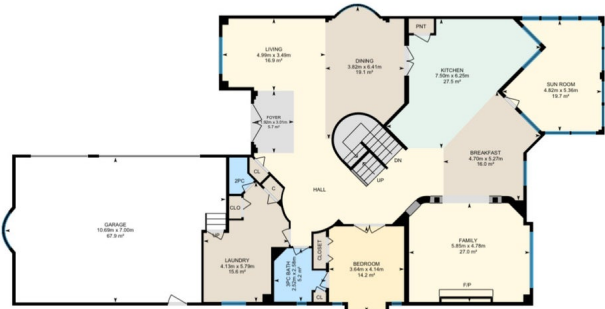
Terwillegar Towne, Edmonton, AB

Stunning 2-storey walkout in sought-after Terwillegar Town offering 4,435 sqft of upscale living space! This 7-bed, 7-bath home is ideal for large or multi-generational families. The main floor showcases a grand formal living room with 2-storey ceilings & fireplace, family room, sunroom, chef's kitchen with stainless steel appliances & rich dark cabinetry, breakfast nook, formal dining, laundry, plus a bedroom & both a 3pc and 2pc bath. Upstairs features 4 spacious bedrooms—2 with ensuites—including a luxurious primary suite with walk-in closet & 5pc spa-like ensuite, a den, and another 5pc bath. The fully finished walkout basement includes a second kitchen, huge rec room, office, hot tub room, 2 more bedrooms, 3pc bath, 2pc bath & ample storage. With dark hardwood flooring, elegant finishes throughout, and a layout designed for both comfort & entertaining, this home has it all. Located steps from the Terwillegar Rec Centre, top-rated schools, parks, and shopping—this is executive living at its finest!

Built in 2003

## Essential Information

MLS® #	E4440369
Price	\$1,599,000



Bedrooms	7
Bathrooms	6.00
Full Baths	5
Half Baths	2
Square Footage	4,223
Acres	0.00
Year Built	2003
Type	Single Family
Sub-Type	Detached Single Family
Style	2 Storey
Status	Active

### Community Information

Address	2423 Tegler Green
Area	Edmonton
Subdivision	Terwillegar Towne
City	Edmonton
County	ALBERTA
Province	AB
Postal Code	T6R 3K2

### Amenities

Amenities	See Remarks
Parking	Triple Garage Attached

### Interior

Interior Features	ensuite bathroom
Appliances	Dryer, Hood Fan, Oven-Built-In, Oven-Microwave, Refrigerator, Stove-Gas, Washer
Heating	Forced Air-1, Natural Gas
Fireplace	Yes
Fireplaces	Tile Surround
Stories	3
Has Basement	Yes
Basement	Full, Finished

### Exterior

Exterior	Wood, Stone
Exterior Features	See Remarks

Roof	Asphalt Shingles
Construction	Wood, Stone
Foundation	Concrete Perimeter

### **School Information**

Elementary	ESTHER STARKMAN SCHOOL
Middle	ESTHER STARKMAN SCHOOL
High	LILLIAN OSBORNE SCHOOL

### **Additional Information**

Date Listed	June 4th, 2025
Days on Market	18
Zoning	Zone 14
HOA Fees	275
HOA Fees Freq.	Annually

DATA IS DEEMED RELIABLE BUT IS NOT GUARANTEED ACCURATE BY THE REALTORS® ASSOCIATION OF EDMONTON. COPYRIGHT 2025 BY THE REALTORS® ASSOCIATION OF EDMONTON. ALL RIGHTS RESERVED. Trademarks are owned or controlled by the Canadian Real Estate Association (CREA) and identify real estate professionals who are members of CREA (REALTOR®, REALTORS®) and/or the quality of services they provide (MLS®, Multiple Listing Service®)

Listing information last updated on June 21st, 2025 at 11:32pm MDT