

\$605,000 - 17056 43 Street, Edmonton

MLS® #E4440273

\$605,000

3 Bedroom, 2.50 Bathroom, 1,999 sqft

Single Family on 0.00 Acres

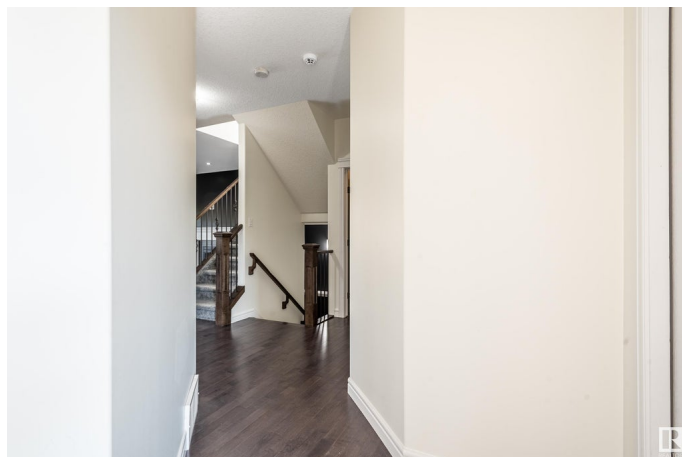
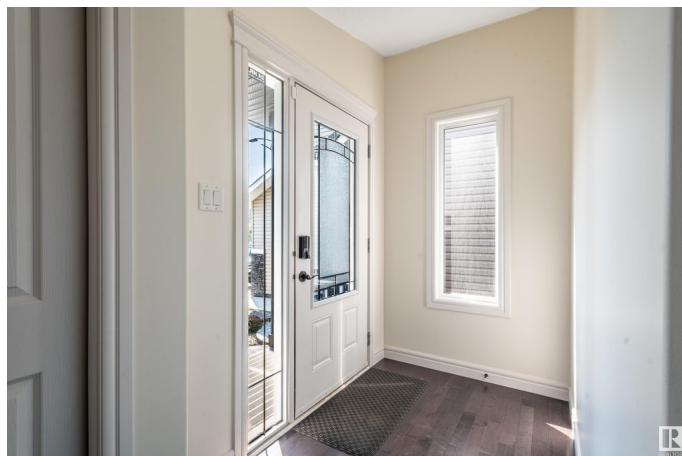
Cy Becker, Edmonton, AB

This stunning 2-storey home offers a perfect balance of comfort, design, and functionality. The main level features 9'™ ceilings, hardwood flooring, fire place, built-in speakers, and an open layout that connects effortlessly with a modern kitchen. Highlights include a gas stove, large granite island, stainless steel appliances, backsplash and pantry – ideal for cooking and entertaining. A den adds flexibility for a home office or quiet retreat. Large windows flood the space with natural light, paired with premium Hunter Douglas top-down bottom-up blinds. Upstairs, the primary bedroom boasts a luxurious ensuite and walk-in closet with custom shelving, along with two more bedrooms and a spacious bonus room. Step outside to a covered deck and backyard oasis with stamped concrete, plus a full BBQ station with built-in cooktop – perfect for outdoor dining and summer nights. Backing onto a walking path, this home was designed to elevate everyday living inside and out. Some photos are virtually staged.

Built in 2015

Essential Information

| | |
|----------|-----------|
| MLS® # | E4440273 |
| Price | \$605,000 |
| Bedrooms | 3 |



| | |
|----------------|------------------------|
| Bathrooms | 2.50 |
| Full Baths | 2 |
| Half Baths | 1 |
| Square Footage | 1,999 |
| Acres | 0.00 |
| Year Built | 2015 |
| Type | Single Family |
| Sub-Type | Detached Single Family |
| Style | 2 Storey |
| Status | Active |

Community Information

| | |
|-------------|-----------------|
| Address | 17056 43 Street |
| Area | Edmonton |
| Subdivision | Cy Becker |
| City | Edmonton |
| County | ALBERTA |
| Province | AB |
| Postal Code | T5Y 0Z3 |

Amenities

| | |
|-----------|-----------------------------------------|
| Amenities | Barbecue-Built-In, Ceiling 9 ft., Patio |
| Parking | Double Garage Attached |

Interior

| | |
|-------------------|-------------------------------------------------------------------------------------------------------------------------------|
| Interior Features | ensuite bathroom |
| Appliances | Dishwasher-Built-In, Dryer, Garage Opener, Microwave Hood Fan, Refrigerator, Stove-Gas, Washer, Window Coverings, See Remarks |
| Heating | Forced Air-1, Natural Gas |
| Stories | 2 |
| Has Basement | Yes |
| Basement | Full, Unfinished |

Exterior

| | |
|-------------------|------------------------------------------------------------------------------------------------------|
| Exterior | Wood, Vinyl |
| Exterior Features | Fenced, Landscaped, Park/Reserve, Playground Nearby, Public Transportation, Schools, Shopping Nearby |
| Roof | Asphalt Shingles |
| Construction | Wood, Vinyl |

Foundation Concrete Perimeter

School Information

Elementary Belvedere School
Middle Steele Heights School
High M.E. LaZerte School

Additional Information

Date Listed June 4th, 2025
Days on Market 27
Zoning Zone 03

DATA IS DEEMED RELIABLE BUT IS NOT GUARANTEED ACCURATE BY THE REALTORS® ASSOCIATION OF EDMONTON. COPYRIGHT 2025 BY THE REALTORS® ASSOCIATION OF EDMONTON. ALL RIGHTS RESERVED.Trademarks are owned or controlled by the Canadian Real Estate Association (CREA) and identify real estate professionals who are members of CREA (REALTOR®, REALTORS®) and/or the quality of services they provide (MLS®, Multiple Listing Service®)
Listing information last updated on July 1st, 2025 at 2:17am MDT