

# \$1,379,999 - 5108 154 Street, Edmonton

MLS® #E4419224

**\$1,379,999**

0 Bedroom, 0.00 Bathroom,  
Single Family on 0.00 Acres

Ramsay Heights, Edmonton, AB

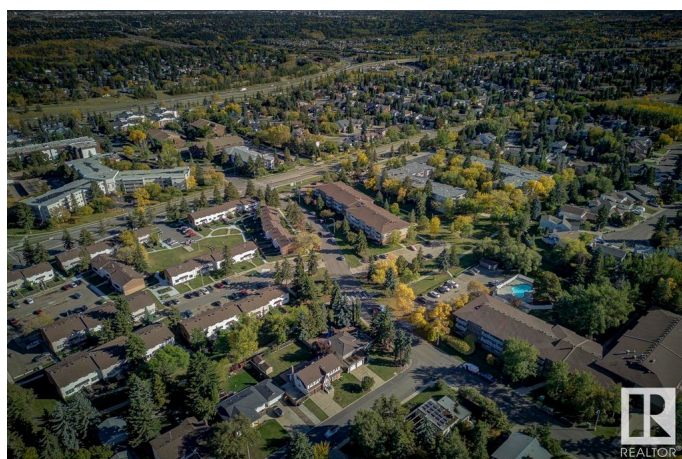
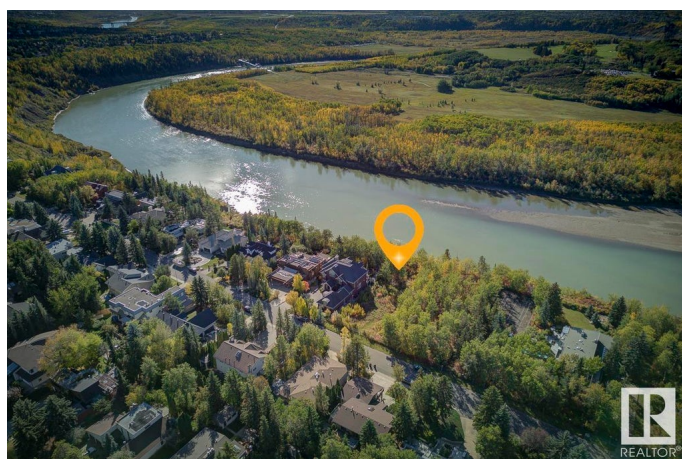
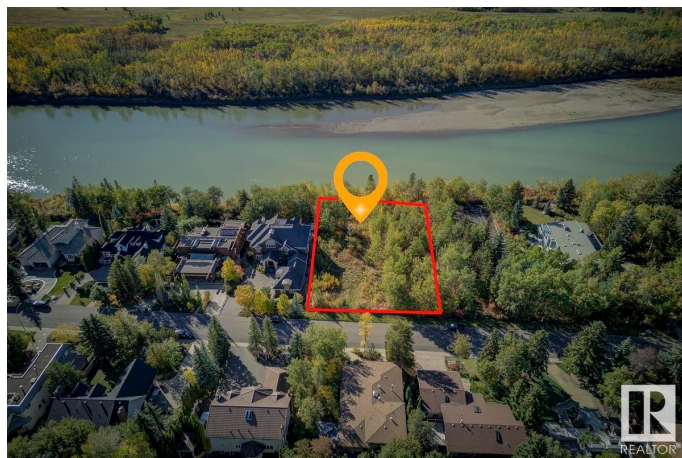
Welcome to 5108 154 St, one of the most stunning lots in all of Edmonton! This gorgeous property sits directly on the river valley, offering year-round panoramic views that will take your breath away. Whether you're watching the sunrise over the river or enjoying the vibrant colours of fall, every day will feel like a masterpiece from this perfect vantage point. This lot is a rare opportunity—a blank canvas for your dream home, surrounded by nature while still being conveniently close to everything the city has to offer. With its unbeatable location and unparalleled beauty, this large 81â€™x353â€™ one-of-a-kind property is undoubtedly among the best Edmonton has to offer, located in one of the city's most prestigious areas!

## Essential Information

MLS® #	E4419224
Price	\$1,379,999
Bathrooms	0.00
Acres	0.00
Type	Single Family
Sub-Type	Vacant Lot/Land
Status	Active

## Community Information

Address 5108 154 Street



Area	Edmonton
Subdivision	Ramsay Heights
City	Edmonton
County	ALBERTA
Province	AB
Postal Code	T6H 5P3

### Exterior

Exterior Features No Back Lane, Park/Reserve, Public Transportation, Ravine View, River Valley View, River View, Schools, Shopping Nearby, Ski Hill Nearby, Treed Lot, Waterfront Property

### Additional Information

Date Listed	January 24th, 2025
Days on Market	150
Zoning	Zone 14

DATA IS DEEMED RELIABLE BUT IS NOT GUARANTEED ACCURATE BY THE REALTORS® ASSOCIATION OF EDMONTON. COPYRIGHT 2025 BY THE REALTORS® ASSOCIATION OF EDMONTON. ALL RIGHTS RESERVED. Trademarks are owned or controlled by the Canadian Real Estate Association (CREA) and identify real estate professionals who are members of CREA (REALTOR®, REALTORS®) and/or the quality of services they provide (MLS®, Multiple Listing Service®)

Listing information last updated on June 23rd, 2025 at 11:48am MDT